



Total Solution Provider in Saw Device

SL06220FV

62.5MHz IF SAW Filter
20.6 MHz Bandwidth
Revision 0: 15. Oct. 2008



-
- Electrical Characteristics
 - Package Dimensions
 - Testing Environment
 - Frequency Characteristics
-

SAWNICS Inc.

460 Cheonheung-ri, Seonggeo-eup, Cheonan-si, Chungcheongnam-do, 330-836 / Korea.
Tel: +82 41 550 9372 / Fax: +82 41 550 9399 / www.sawnics.com

□ Electrical Characteristics

Maximum Ratings

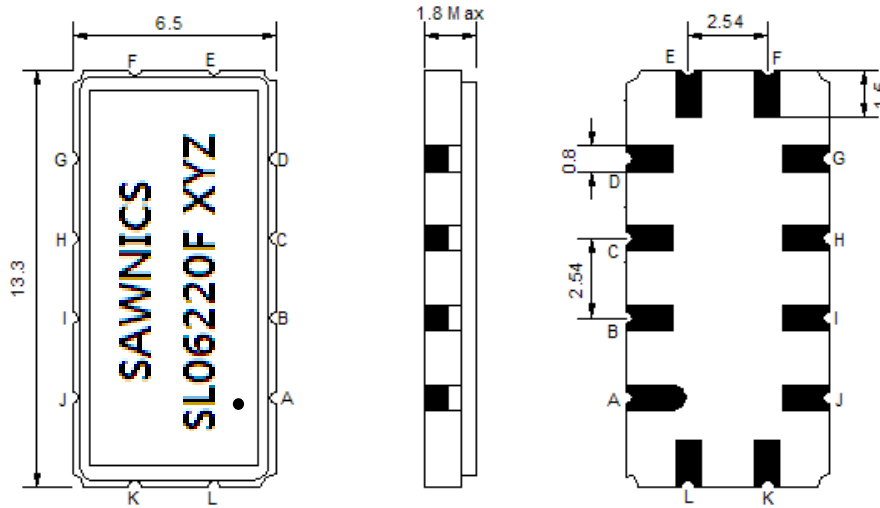
Parameters Description	Unit	Minimum	Typical	Maximum
Operation Temperature Range	°C	-	25	-
Storage Temperature Range	°C	-40	-	85
Maximum DC Voltage	V	-	-	10
Maximum Input Power	dBm	-	-	10
Source Impedance (single ended) ⁽¹⁾	Ω	-	50	-
Load Impedance (single ended) ⁽¹⁾	Ω	-	50	-
Package type & size	V			
Length x Width	mm ²	-	13.3 x 6.5	-
Height	mm	-	-	1.8

Electrical Specification

Center Frequency (Fo)	MHz	-	62.5	-
Insertion Loss at Fo	dB	-	13.50	16.00
Group Delay Variation (Fo±9.22MHz)	ns	-	20	50
Absolute Delay Time at Fo	us	-	1.08	-
Temperature Coefficient	ppm/°C	-	-86	-
Amplitude Ripple (Fo±9.22MHz)	dB	-	0.3	0.85
Bandwidth at -1dB	MHz	-	20.60	-
Bandwidth at -3dB	MHz	21.00	21.35	-
Bandwidth at -15dB	MHz	-	23.03	24.00
Bandwidth at -40dB	MHz	-	24.85	-
Ultimate Rejection	dB	40	47	-

Notes : (1) With Matching Network (Ref. Testing Environment Circuit as shown below).
Those impedances could be modified with different impedance values and/or structures, if necessary.

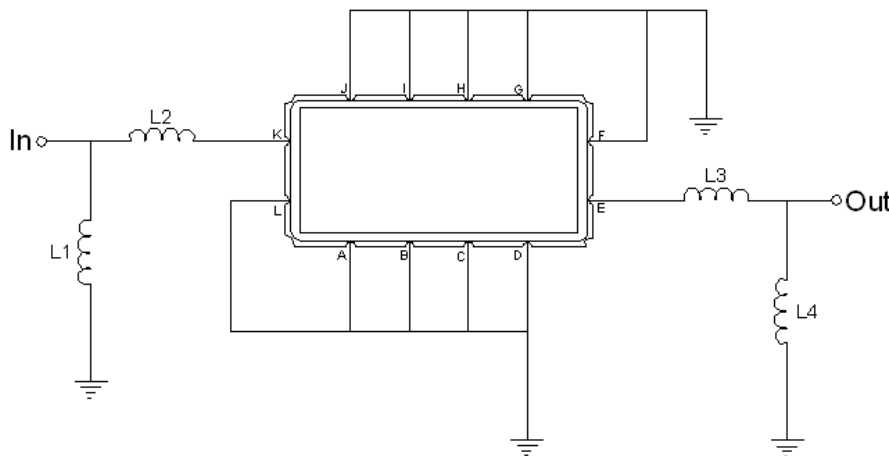
Package Dimensions



- ① SAWNICS: Brand
- ② SL06220F: Model Name
- ③ X : Date Code (Year)
- ④ Y : Date Code (Month)
- ⑤ Z : Date Code (Date)
- ⑥ ● : Index Dot

Pin Description	
A, B, C, D, F, G, H, I, J, L	Ground
K	Input
E	Output

Testing Environment



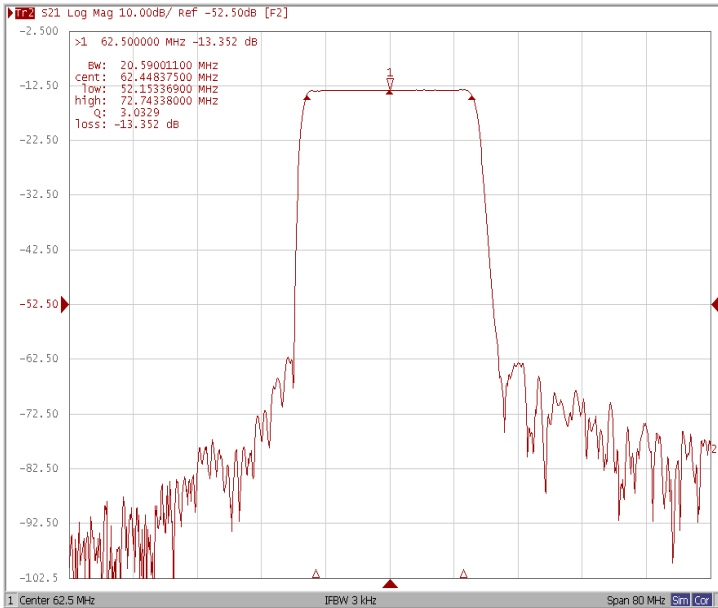
Test Fixture & Values	
Input	L1=82 nH, L2=15 nH,
Output	L3=33 nH, L4=150nH
Source/Load Impedance	50 Ω



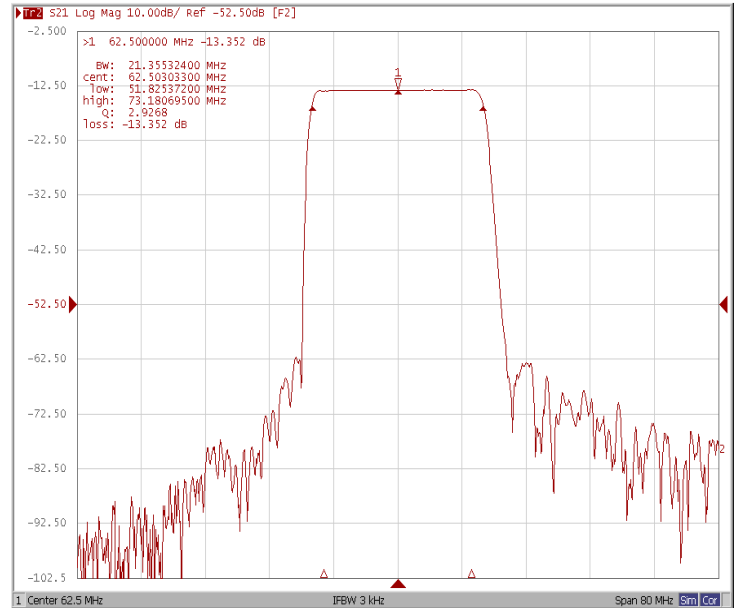
Frequency Characteristics

Frequency Response

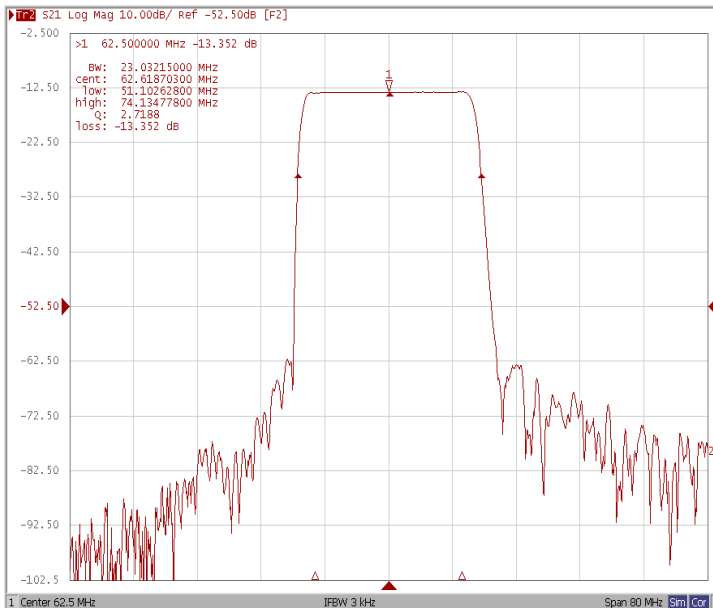
Bandwidth at -1.0 dB



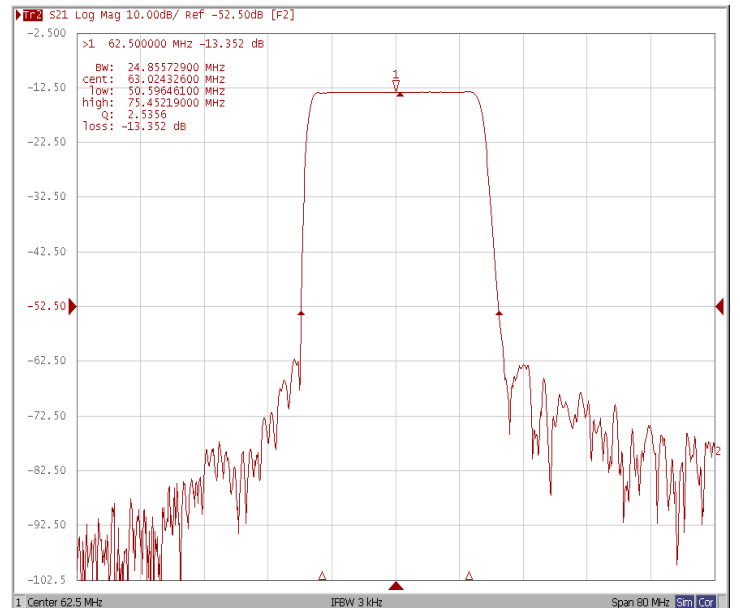
Bandwidth at -3.0 dB



Bandwidth at -15.0 dB



Bandwidth at -40.0 dB

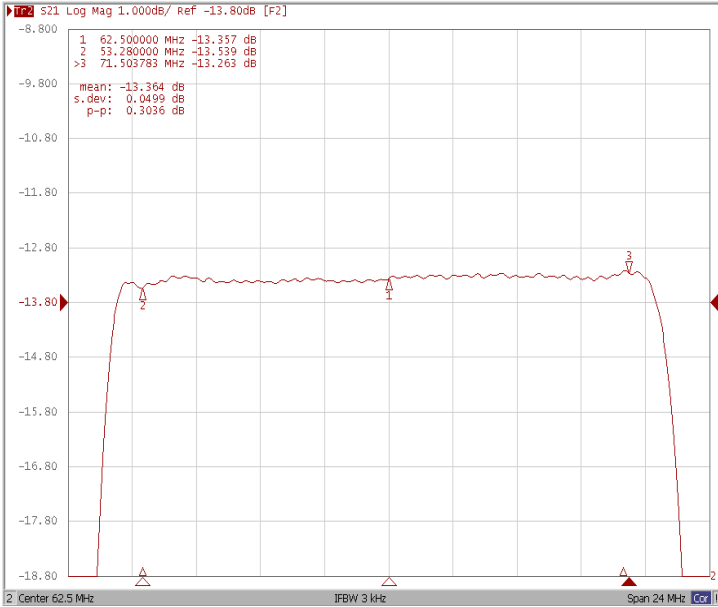




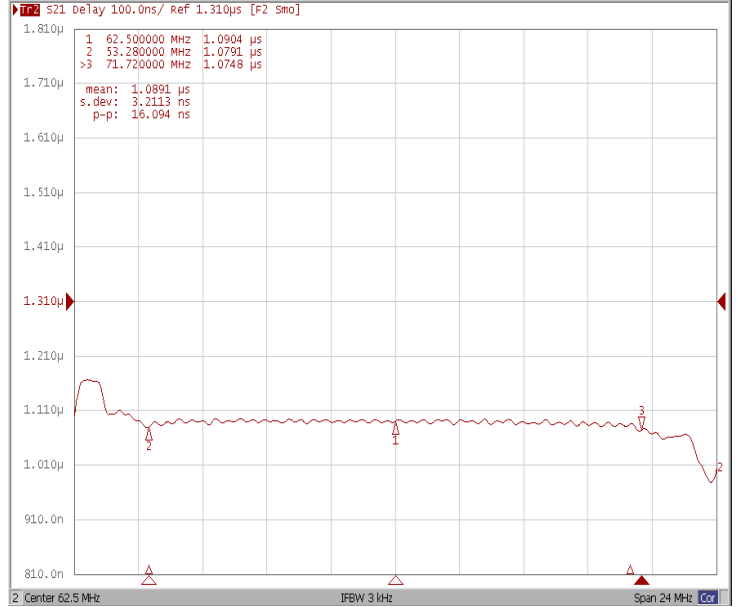
Frequency Characteristics

Frequency Response

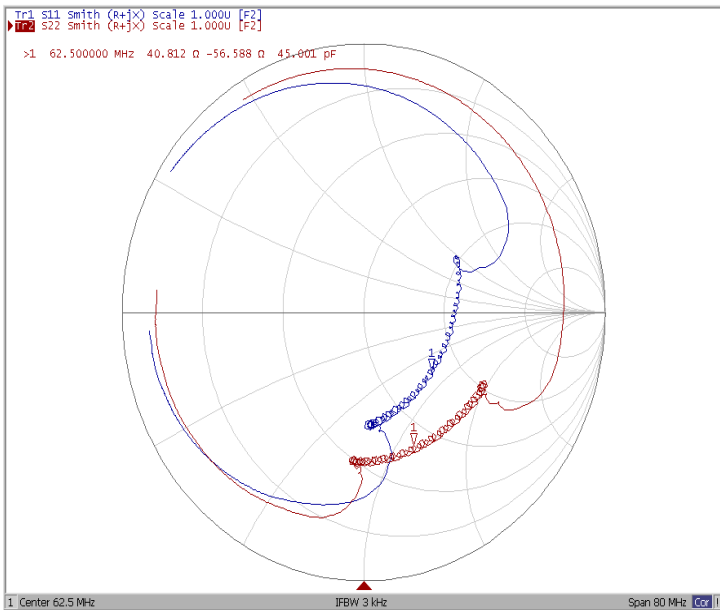
Ripple Variation Fo±9.22MHz



Group Delay Variation Fo±9.22MHz



Smith Chart



VSWR

